

Gas regulator with dial flowmeter

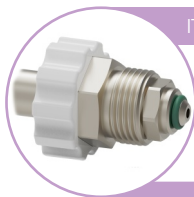


Just Press P are specially designed for its use either in home oxygen therapy services or in hospital facilities with no oxygen piped network available. Its simple and robust design includes flow selector and the possibility to add quick pressure connections.

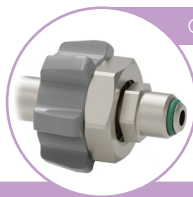


Just Press P features

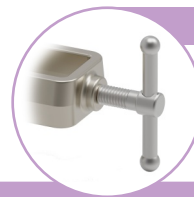
- Piston gas regulators for its use on oxygen cylinders at 200 bar (*please consult our staff about other gases*).
- Turning the top control button the operator can select the flow that will be supplied by its inferior connection. This selection appears in the front display. Models available for oxygen and medical air with **2, 4, 6, 8, 15, 30 or 50 l/min** top range.
- Self-centering of the flow.
- They incorporate a double scale manometer (bar/psi) and color code, to read the pressure of the cylinder.



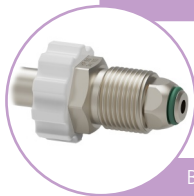
ITC EP-6



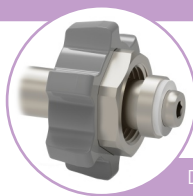
CGA V-1



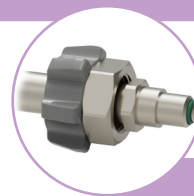
Pin-Index



BS 341-3



DIN 477-1




NF E29-116

INLET CONNECTION STANDARDS

(Consult our staff about other standards)

TECHNICAL SPECIFICATIONS

Materials:	Aluminium Alloys, Nickel plated brass, ABS and Stainless Steel.	
Precision:	± 30 % from 0 to 1,5 l/min	± 20 % above 1,5 l/min
Maximum supply pressure:	300 bar	
Available flows*:	0 to 2 lpm 0 - 0,2 - 0,4 - 0,6 - 0,8 - 1 - 1,2 - 1,4 - 1,5 - 1,7 - 1,8 - 2 0 to 4 lpm 0 - 0,2 - 0,4 - 0,6 - 0,8 - 1 - 1,5 - 2 - 2,5 - 3 - 3,5 - 4 0 to 6 lpm 0 - 0,2 - 0,4 - 0,6 - 0,8 - 1 - 1,5 - 2 - 3 - 4 - 5 - 6 0 to 8 lpm 0 - 0,3 - 0,6 - 1 - 1,5 - 2 - 3 - 4 - 5 - 6 - 7 - 8 0 to 15 lpm 0 - 0,5 - 1 - 2 - 3 - 4 - 5 - 6 - 8 - 10 - 12 - 15 0 to 30 lpm 0 - 1 - 2 - 4 - 6 - 8 - 10 - 12 - 15 - 20 - 25 - 30 0 to 50 lpm 0 - 3 - 6 - 10 - 15 - 20 - 25 - 30 - 35 - 40 - 45 - 50	
Inlet connections:	ITC EP-6, BS-341, DIN 477, ISO 5145, CGA V-1, NF E29-650, etc...	
Outlet connetions:	DISS 9/16", nozzle for flexible hose, M12x125, G3/8, G1/4, automatic record	
Available gases:	O ₂ , Medical Air, O ₂ /He (Mix), CO ₂ , N ₂	
Point of design:	4,5 ± 0,5 bar	
Calibration:	101,3 kPa y 23 °C	
Dimensions:	Ø40,0 x 135 mm	 190 x 160 x 90 mm (W x D x H)
Weight:	560 grs	
Standards:	In compliance with Directive 93/42/EEC In compliance with UNE-EN ISO 10524 In compliance with UNE-EN ISO 15002	
Classification:	Class IIb	

